



माझं घर. माझा प्रदेश.



माझं घर माझा जदेश

1 & 2 BHK APARTMENTS  
KANHE PHATA, TALEGAON

Our own joyful homeland is shaping up in style at Kanhe Phata, near Talegaon. Amidst the recent developments happening in that area, Saarrthi Swadesh takes pride in providing pocket-friendly lifestyle homes that are affordable to all. These pollution free, breezy 1 and 2 BHK abodes are studded with lifestyle amenities that add to quality family life in more ways than one.

Brought to you by the prestigious Saarrthi Group, the name behind few of the major landmarks in Pune, Saarrthi Swadesh borrows the same level of quality and detailing that go behind every other projects of Saarrthi.

So let's set our goals, dreams and desires to create something that's our very own. Let's create a nation that's ours. Let's move to... Swadesh!





स्वदेश प्रवेश

1 & 2 BHK APARTMENTS  
KANHE PHATA, TALEGAON

## AMENITIES



Children's Play Area



Swimming Pool / Kids' Pool



Gymnasium



Party Lawn



Club House / Multipurpose Hall



Indoor Games  
(Table Tennis and Carrom )



Jogging Track



## SPECIFICATIONS



### Flooring

- 2' x 2' vitrified tile flooring



### Bathroom

- Designer bathroom tile flooring
- Ceramic tile dado up to door height
- Good quality CP fittings
- Provision for washing machine (inlet & outlet)
- Solar water heating system in master bedroom



### Electrical Fittings

- Good quality switches
- Sufficient points in all rooms
- Concealed copper wiring
- AC point in master bedroom
- Cable TV & telephone points in living room and master bedroom



### Kitchen

- Granite platform with stainless steel sink
- 2' high ceramic tile dado above kitchen platform



### Doors / Windows

- Sliding aluminum powder coated windows moulded with polish main door
- Panel doors for rooms



### Painting

Internal oil bond distemper



### General

- Aesthetically designed entrance lobby
- Power backup in common areas
- Good quality elevators
- CCTV in common areas (periphery of the building and the ground floor)
- Earthquake resistant RCC frame structure
- Good quality main entrance door lock
- Intercom facility
- Fire fighting system as per norms
- Sewage treatment plant (STP)
- Rain water harvesting
- Water treatment plant



### KEY DISTANCES

• Kanhe Railway Station	- 02 min	• Chinchwad	- 25 min	• Lonavala	- 25 min
• Kamshet	- 10 min	• Hinjewadi	- 30 min	• Subrata Roy Sahara Stadium Ground -	20 min
• MIMER Medical College and Talegaon General Hospital	- 12 min	• MIDC Talegaon	- 15 min	• Pune - Mumbai Express Highway	- 20 min
• Talegaon Dabhade	- 15 min	• MIDC Chinchwad	- 25 min		
		• MIDC Bhosari	- 30 min		

# BUILDING - A | 1ST FLOOR PLAN

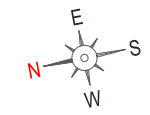


FLAT NO	CARPET AREA (SQ.MT)	DRY / OPEN BALCONY (SQ.MT)	TERRACES AREA (SQ.MT)
101	32.58	5.87	0
102	32.58	5.87	0
103	45.54	6.51	7.16
104	45.54	6.51	7.16
105	30.59	1.62	7.25
106	30.59	1.62	7.25

FLAT NO	CARPET AREA (SQ.MT)	DRY / OPEN BALCONY (SQ.MT)	TERRACES AREA (SQ.MT)
107	30.59	1.62	7.25
108	30.59	1.62	7.25
109	45.54	6.51	7.16
110	45.54	6.51	7.16
111	32.58	5.87	0
112	32.58	5.87	0



माझं घर. माझा प्रदेश.



NOTES: 1. All areas are mentioned in metric system. 2. All areas are measured from wall finish to wall finish, considering 20 MM thick internal gypsum, 25 MM thick external plaster and 25 MM thick toilet tile finish. 3. Internal brick work and columns are included in carpet area. 4. Balconies, terraces and enclosed balconies areas are mentioned separately. 5. Furniture is for indicated purpose. Service shaft & Electrical equipment/fixture location may vary as per site condition. 6. Variation in the dimensions may be observed as Sanctioned drawings mentions unfinished dimensions.

# BUILDING - A | TYPICAL FLOOR PLAN

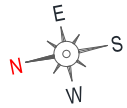


FLAT NO	CARPET AREA (SQ.MT)	DRY / OPEN BALCONY (SQ.MT)
201, 301, 401, 501, 601, 701	32.58	5.87
202, 302, 402, 502, 602, 702	32.58	5.87
203, 303, 403, 503, 603, 703	45.54	6.51
204, 304, 404, 504, 604, 704	45.54	6.51
205, 305, 405, 505, 605, 705	28.07	4.14
206, 306, 406, 506, 606, 706	28.07	4.14

FLAT NO	CARPET AREA (SQ.MT)	DRY / OPEN BALCONY (SQ.MT)
207, 307, 407, 507, 607, 707	28.07	4.14
208, 308, 408, 508, 608, 708	28.07	4.14
209, 309, 409, 509, 609, 709	45.54	6.51
210, 310, 410, 510, 610, 710	45.54	6.51
211, 311, 411, 511, 611, 711	32.58	5.87
212, 312, 412, 512, 612, 712	32.58	5.87



माझं घर. माझा प्रदेश.



NOTES: 1. All areas are mentioned in metric system. 2. All areas are measured from wall finish to wall finish, considering 20 mm thick internal gypsum, 25 mm thick external plaster and 25 mm thick toilet tile finish. 3. Internal brick work and columns are included in carpet area. 4. Balconies, terraces and enclosed balconies areas are mentioned separately. 5. Furniture is for indicated purpose. Service shaft & Electrical equipment/fixture location may vary as per site condition. 6. Variation in the dimensions may be observed as Sanctioned drawings mentions unfinished dimensions.

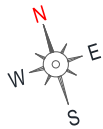
# BUILDING - C | 1ST FLOOR PLAN

FLAT NO	CARPET AREA (SQ.MT)	DRY / OPEN BALCONY (SQ.MT)	TERRACES AREA (SQ.MT)
101	32.58	5.87	0
102	32.58	5.87	0
103	45.54	6.51	7.16
104	45.54	6.51	7.16
105	30.59	1.62	7.25
106	30.59	1.62	7.25

FLAT NO	CARPET AREA (SQ.MT)	DRY / OPEN BALCONY (SQ.MT)	TERRACES AREA (SQ.MT)
107	30.59	1.62	7.25
108	30.59	1.62	7.25
109	45.54	6.51	7.16
110	45.54	6.51	7.16
111	32.58	5.87	0
112	32.58	5.87	0



माझं घर, माझा प्रदेश



NOTES: 1. All areas are mentioned in metric system. 2. All areas are measured from wall finish to wall finish, considering 20 MM thick internal gypsum, 25 MM thick external plaster and 25 MM thick toilet tile finish. 3. Internal brick work and columns are included in carpet area.

4. Balconies, terraces and enclosed balconies areas are mentioned separately. 5. Furniture is for indicated purpose. Service shaft & Electrical equipment/fixture location may vary as per site condition. 6. Variation in the dimensions may be observed as Sanctioned drawings mentions unfinished dimensions.

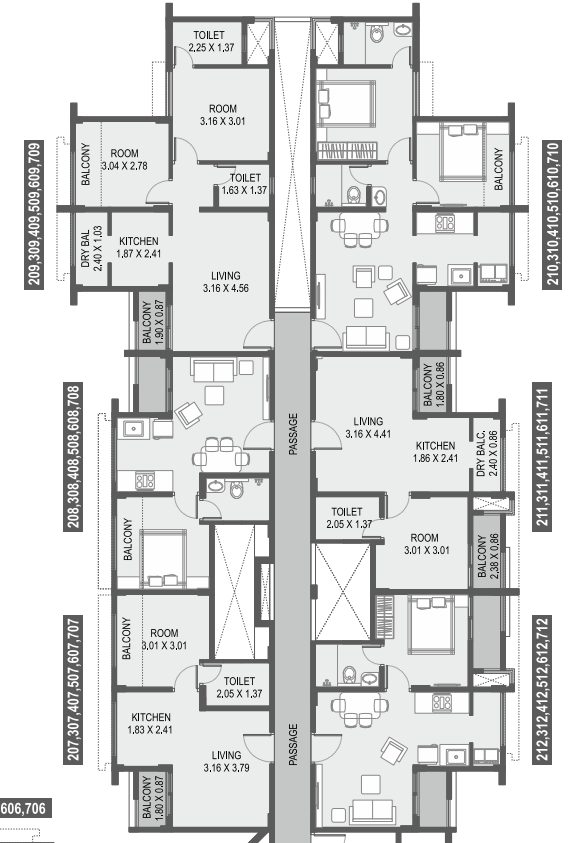


**MAHARERA Reg. No. :P52100003849**  
Available at website - <http://www.maharera.mahaonline.gov.in>

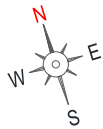
# BUILDING - C | TYPICAL FLOOR PLAN

FLAT NO	CARPET AREA (SQ.MT)	DRY / OPEN BALCONY (SQ.MT)
201, 301, 401, 501, 601, 701	32.58	5.87
202, 302, 402, 502, 602, 702	32.58	5.87
203, 303, 403, 503, 603, 703	45.54	6.51
204, 304, 404, 504, 604, 704	45.54	6.51
205, 305, 405, 505, 605, 705	28.07	4.14
206, 306, 406, 506, 606, 706	28.07	4.14

FLAT NO	CARPET AREA (SQ.MT)	DRY / OPEN BALCONY (SQ.MT)
207, 307, 407, 507, 607, 707	28.07	4.14
208, 308, 408, 508, 608, 708	28.07	4.14
209, 309, 409, 509, 609, 709	45.54	6.51
210, 310, 410, 510, 610, 710	45.54	6.51
211, 311, 411, 511, 611, 711	32.58	5.87
212, 312, 412, 512, 612, 712	32.58	5.87



माझं घर, माझा प्रदेश



NOTES: 1. All areas are mentioned in metric system. 2. All areas are measured from wall finish to wall finish, considering 20 MM thick internal gypsum, 25 MM thick external plaster and 25 MM thick toilet tile finish. 3. Internal brick work and columns are included in carpet area.

4. Balconies, terraces and enclosed balconies areas are mentioned separately. 5. Furniture is for indicated purpose. Service shaft & Electrical equipment/fixture location may vary as per site condition. 6. Variation in the dimensions may be observed as Sanctioned drawings mentions unfinished dimensions.



**MAHARERA Reg. No. :P52100003849**  
Available at website - <http://www.maharera.mahaonline.gov.in>



मायं घर, माया प्रदेश

# BUILDING - B | 1ST FLOOR PLAN

FLAT NO	CARPET AREA (SQ.MT)	DRY / OPEN BALCONY (SQ.MT)	TERRACES AREA (SQ.MT)
101	32.56	5.88	0
102	32.56	5.88	0
103	32.56	5.88	0
104	32.56	5.88	0.98
105	32.56	5.88	0.98
106	32.56	5.88	0.98
107	32.56	5.88	0.98
108	32.56	5.88	0
109	32.56	5.88	0
110	32.56	5.88	0
111	32.56	5.88	0
112	32.56	5.88	0
113	32.56	5.88	0
114	32.56	5.88	0



NOTES: 1. All areas are mentioned in metric system. 2. All areas are measured from wall finish to wall finish, considering 20 MM thick internal gypsum, 25 MM thick external plaster and 25 MM thick toilet tile finish. 3. Internal brick work and columns are included in carpet area.

4. Balconies, terraces and enclosed balconies areas are mentioned separately. 5. Furniture is for indicated purpose. Service shaft & Electrical equipment/fixture location may vary as per site condition. 6. Variation in the dimensions may be observed as Sanctioned drawings mentions unfinished dimensions.



**MAHARERA Reg. No. :P5210003849**

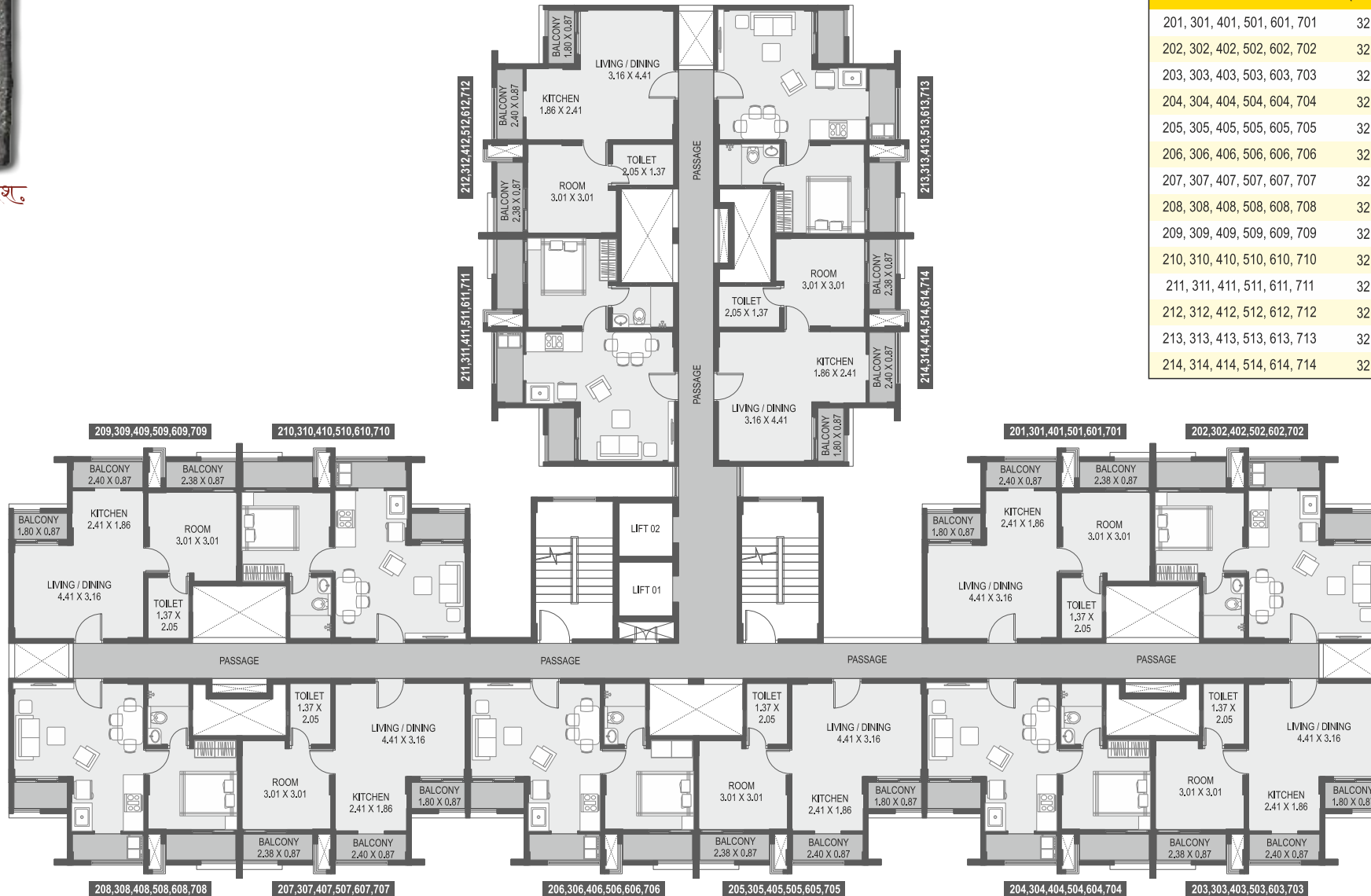
Available at website - <http://www.maharera.mahaonline.gov.in>



मायं घरः माया प्रदेशः

# BUILDING - B | TYPICAL FLOOR PLAN

FLAT NO	CARPET AREA (SQ.MT)	DRY / OPEN BALCONY (SQ.MT)
201, 301, 401, 501, 601, 701	32.56	5.88
202, 302, 402, 502, 602, 702	32.56	5.88
203, 303, 403, 503, 603, 703	32.56	5.88
204, 304, 404, 504, 604, 704	32.56	5.88
205, 305, 405, 505, 605, 705	32.56	5.88
206, 306, 406, 506, 606, 706	32.56	5.88
207, 307, 407, 507, 607, 707	32.56	5.88
208, 308, 408, 508, 608, 708	32.56	5.88
209, 309, 409, 509, 609, 709	32.56	5.88
210, 310, 410, 510, 610, 710	32.56	5.88
211, 311, 411, 511, 611, 711	32.56	5.88
212, 312, 412, 512, 612, 712	32.56	5.88
213, 313, 413, 513, 613, 713	32.56	5.88
214, 314, 414, 514, 614, 714	32.56	5.88



NOTES: 1. All areas are mentioned in metric system. 2. All areas are measured from wall finish to wall finish, considering 20 MM thick internal gypsum, 25 MM thick external plaster and 25 MM thick toilet tile finish. 3. Internal brick work and columns are included in carpet area.

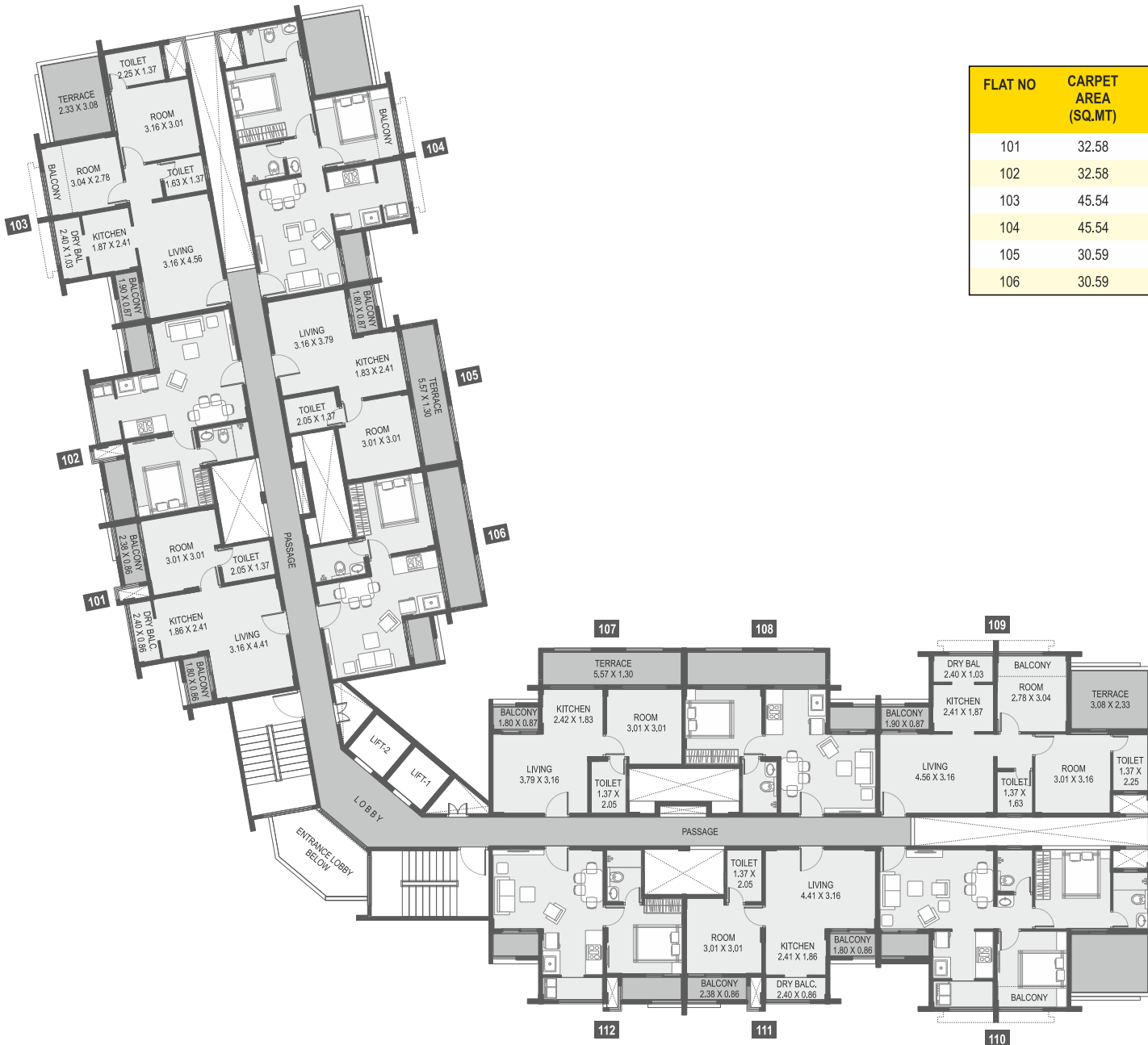
4. Balconies, terraces and enclosed balconies areas are mentioned separately. 5. Furniture is for indicated purpose. Service shaft & Electrical equipment/fixture location may vary as per site condition. 6. Variation in the dimensions may be observed as Sanctioned drawings mentions unfinished dimensions.



**MAHARERA Reg. No. :P52100003849**

Available at website - <http://www.maharera.mahaonline.gov.in>

# BUILDING - D | 1ST FLOOR PLAN

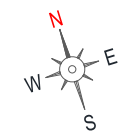


FLAT NO	CARPET AREA (SQ.MT)	DRY / OPEN BALCONY (SQ.MT)	TERRACES AREA (SQ.MT)
101	32.58	5.87	0
102	32.58	5.87	0
103	45.54	6.51	7.16
104	45.54	6.51	7.16
105	30.59	1.62	7.25
106	30.59	1.62	7.25

FLAT NO	CARPET AREA (SQ.MT)	DRY / OPEN BALCONY (SQ.MT)	TERRACES AREA (SQ.MT)
107	30.59	1.62	7.25
108	30.59	1.62	7.25
109	45.54	6.51	7.16
110	45.54	6.51	7.16
111	32.58	5.87	0
112	32.58	5.87	0

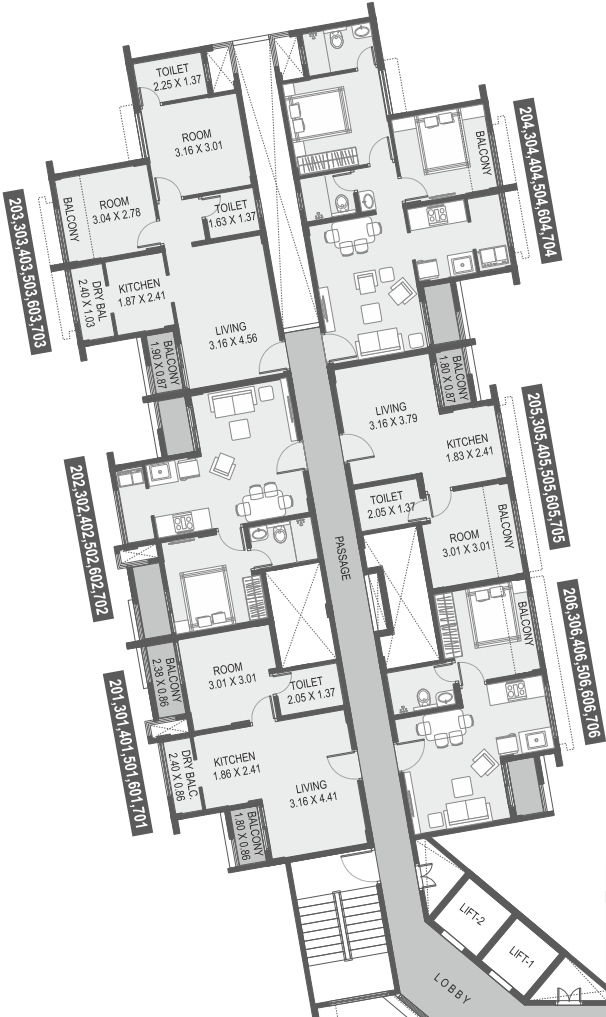


माझं घर. माझा प्रदेश.



NOTES: 1. All areas are mentioned in metric system. 2. All areas are measured from wall finish to wall finish, considering 20 MM thick internal gypsum, 25 MM thick external plaster and 25 MM thick toilet tile finish. 3. Internal brick work and columns are included in carpet area. 4. Balconies, terraces and enclosed balconies areas are mentioned separately. 5. Furniture is for indicated purpose. Service shaft & Electrical equipment/fixture location may vary as per site condition. 6. Variation in the dimensions may be observed as Sanctioned drawings mentions unfinished dimensions.

**BUILDING - D | TYPICAL FLOOR PLAN**

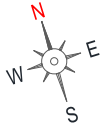


FLAT NO	CARPET AREA (SQ.MT)	DRY / OPEN BALCONY (SQ.MT)
201, 301, 401, 501, 601, 701	32.58	5.87
202, 302, 402, 502, 602, 702	32.58	5.87
203, 303, 403, 503, 603, 703	45.54	6.51
204, 304, 404, 504, 604, 704	45.54	6.51
205, 305, 405, 505, 605, 705	28.07	4.14
206, 306, 406, 506, 606, 706	28.07	4.14

FLAT NO	CARPET AREA (SQ.MT)	DRY / OPEN BALCONY (SQ.MT)
207, 307, 407, 507, 607, 707	28.07	4.14
208, 308, 408, 508, 608, 708	28.07	4.14
209, 309, 409, 509, 609, 709	45.54	6.51
210, 310, 410, 510, 610, 710	45.54	6.51
211, 311, 411, 511, 611, 711	32.58	5.87
212, 312, 412, 512, 612, 712	32.58	5.87



माझं घर. माझा प्रदेश.



NOTES: 1. All areas are mentioned in metric system. 2. All areas are measured from wall finish to wall finish, considering 20 MM thick internal gypsum, 25 MM thick external plaster and 25 MM thick toilet tile finish. 3. Internal brick work and columns are included in carpet area. 4. Balconies, terraces and enclosed balconies areas are mentioned separately. 5. Furniture is for indicated purpose. Service shaft & Electrical equipment/fixture location may vary as per site condition. 6. Variation in the dimensions may be observed as Sanctioned drawings mentions unfinished dimensions.



माझं घर, माझा प्रदेश.

NOTES: 1. All areas are mentioned in metric system. 2. All areas are measured from wall finish to wall finish, considering 20 MM thick internal gypsum, 25 MM thick external plaster and 25 MM thick toilet tile finish. 3. Internal brick work and columns are included in carpet area. 4. Balconies, terraces and enclosed balconies areas are mentioned separately. 5. Furniture is for indicated purpose. Service shaft & Electrical equipment/fixture location may vary as per site condition. 6. Variation in the dimensions may be observed as Sanctioned drawings mentions unfinished dimensions.



**MAHAREGA Reg. No. :P52100003849**  
Available at website - <http://www.maharega.mahaonline.gov.in>